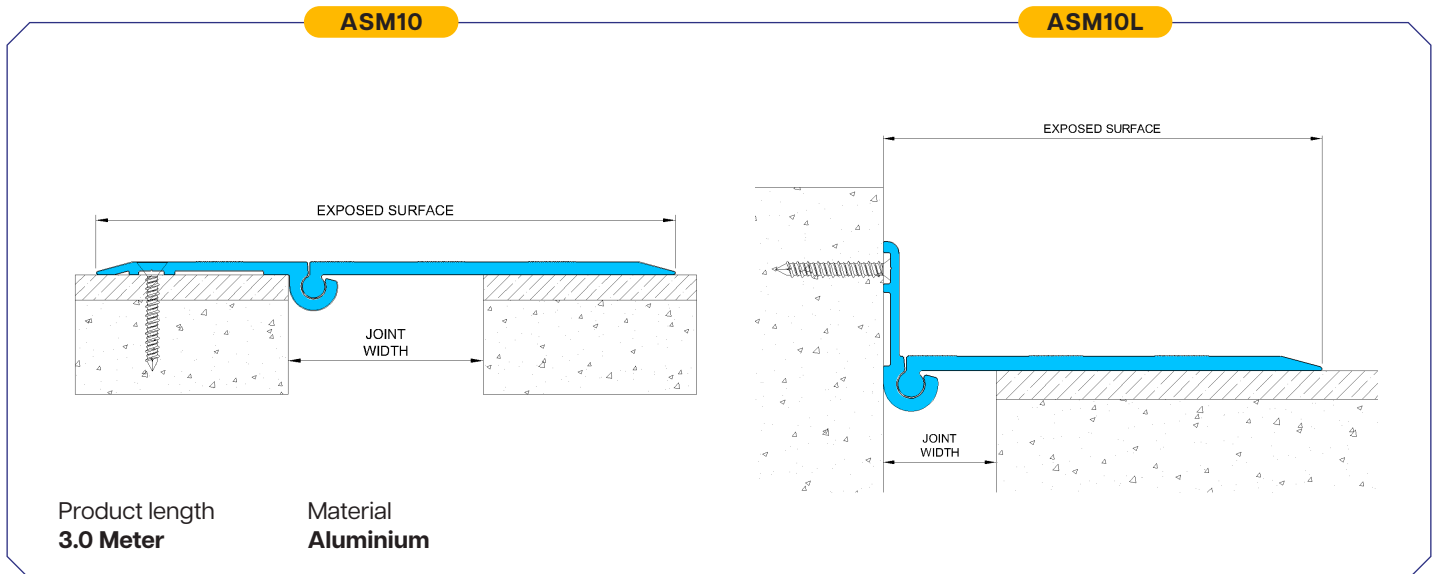


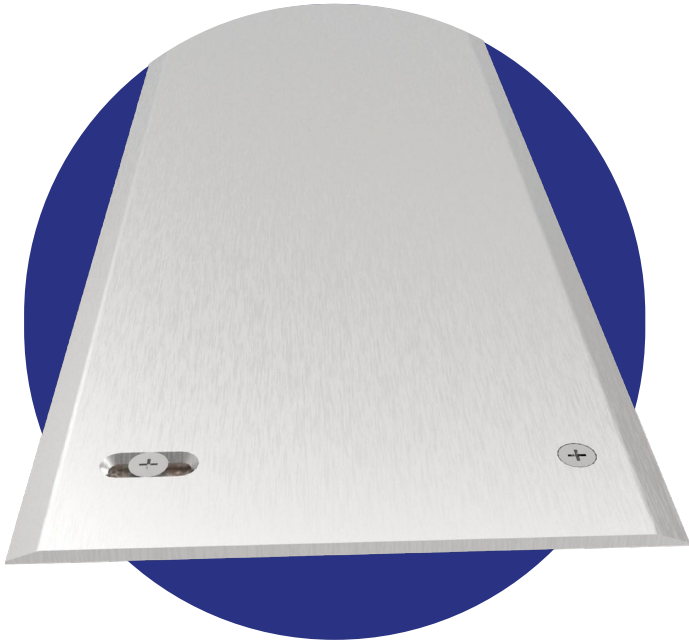
ASM10

For Floor

- Surface mounted for easy installation.
- Anti-slip surface serrations.
- Suitable for retrofit applications.
- Low-maintenance and suits for floors with uneven elevations.
- Available for both floor-to-floor and floor-to-wall conditions.

Model	Joint Width (mm)	Exposed Surface (mm)	Minimum Opening (mm)	Maximum Opening (mm)
ASM10-25	25	232	20	50
ASM10-50	50	232	20	100
ASM10-75	75	232	20	113
ASM10-100	100	232	20	150
ASM10-125	125	317	20	187
ASM10-150	150	317	20	225
ASM10-175	175	377	20	263
ASM10-200	200	377	20	300



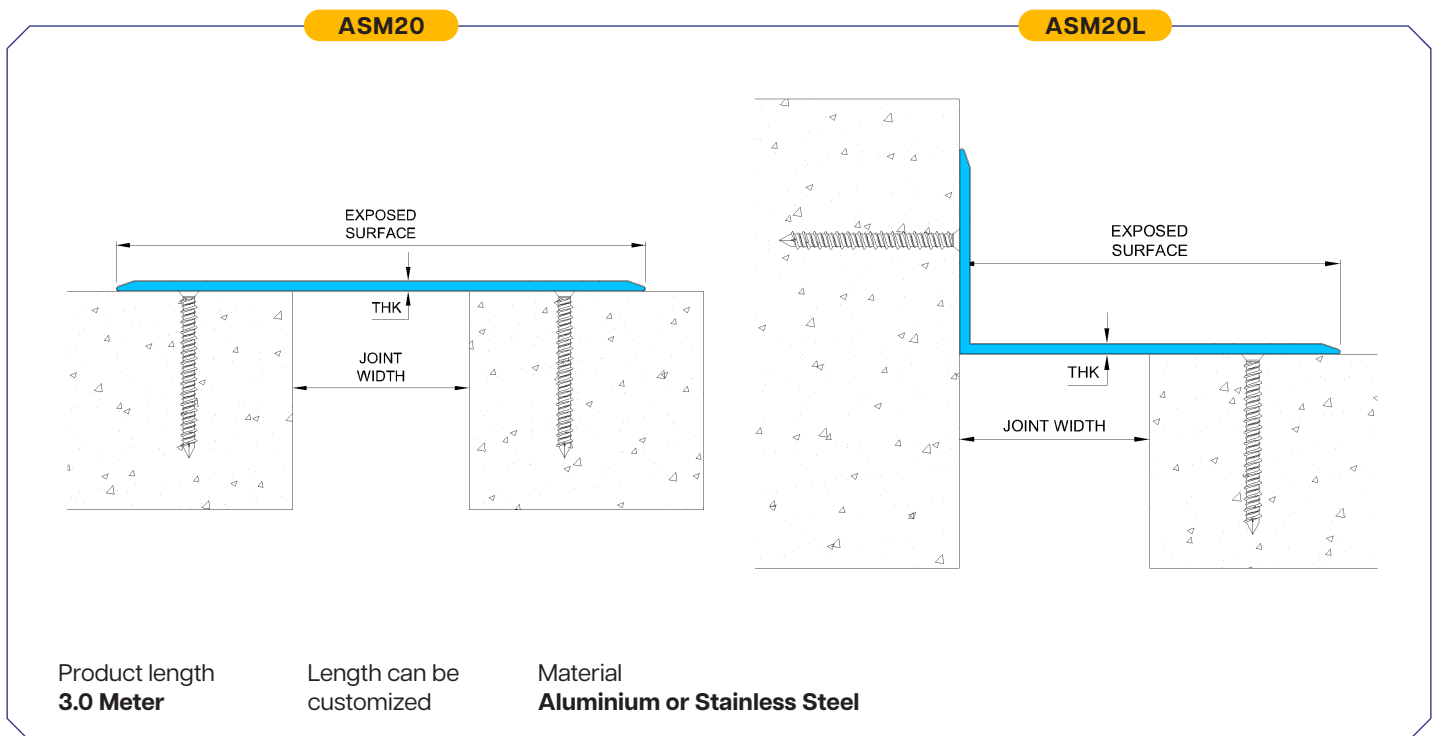


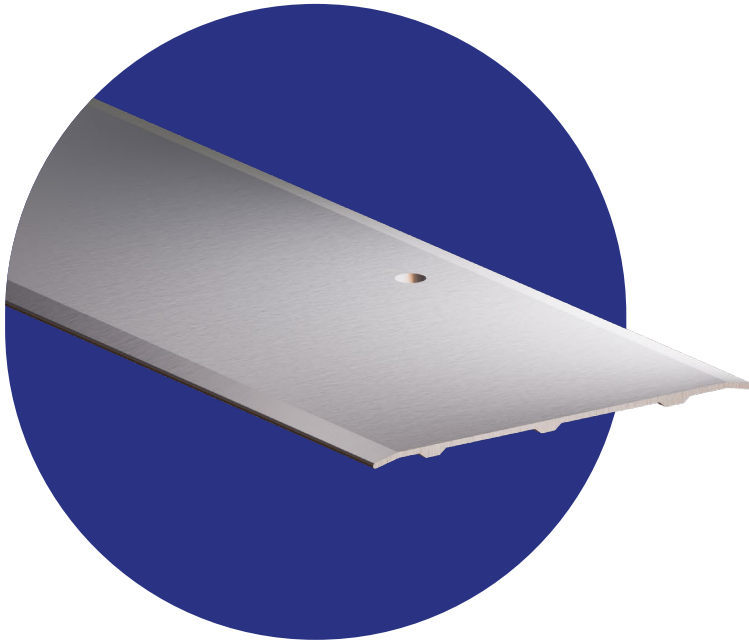
ASM20

For Floor

- A cost-effective solution, especially for retrofits and surface-mounting.
- Beveled edges ensure pedestrian safety.
- Allow for easy installation.
- Slotted holes guide the cover plate during building expansion and contraction.
- Suitable for small interior joints.
- Available for both floor-to-floor and floor-to-wall conditions.

Model	Joint Width (mm)	Exposed Surface (mm)	Total Movement (mm)
ASM20-50	50	150	16(±8)
ASM20-100	100	200	16(±8)
ASM20L-50	50	150	16(±8)
ASM20L-100	100	100	16(±8)



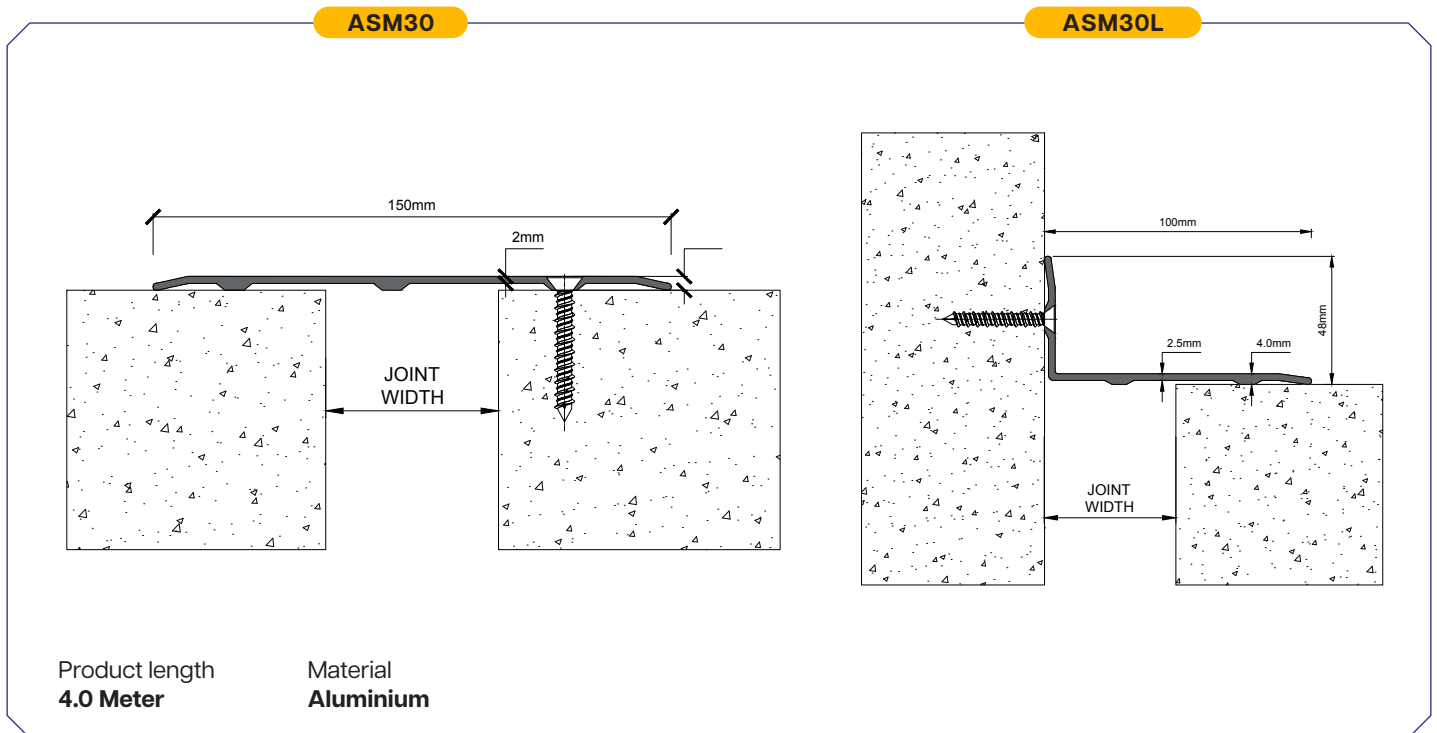


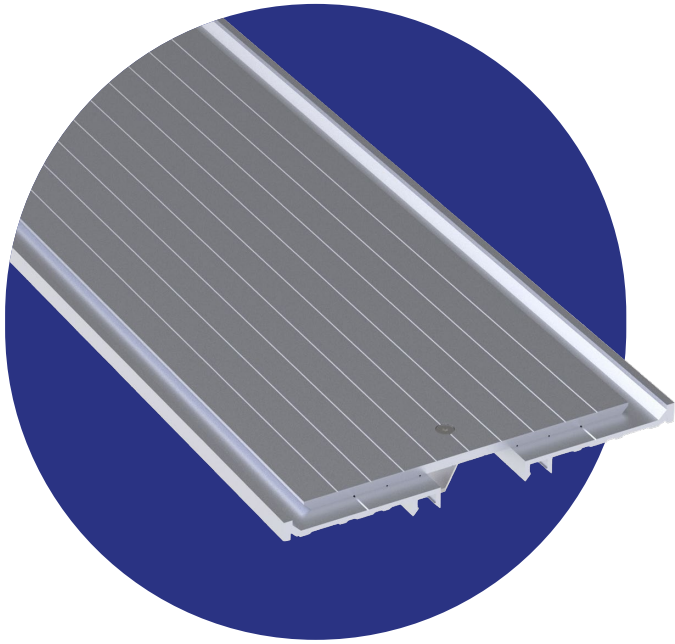
ASM30

For Floor

- Provides a cost-efficient option for retrofit and surface-mounted applications.
- Bevelled edges reduce trip hazards and improve safety.
- Designed for ease of installation.
- Intended for small interior joint usage.
- Suitable for floor, wall or ceiling applications.

Model	Joint Width (mm)	Exposed Surface (mm)	Total Movement (mm)	Profile Height (mm)	Loading Capacity
ASM30-25	25	150	+25/-25	4	Pedestrian
ASM30-50	50	225	+50/-50	4	Pedestrian
ASM30L-25	25	100	+25/-25	4	Pedestrian
ASM30L-50	50	170	+50/-50	4	Pedestrian



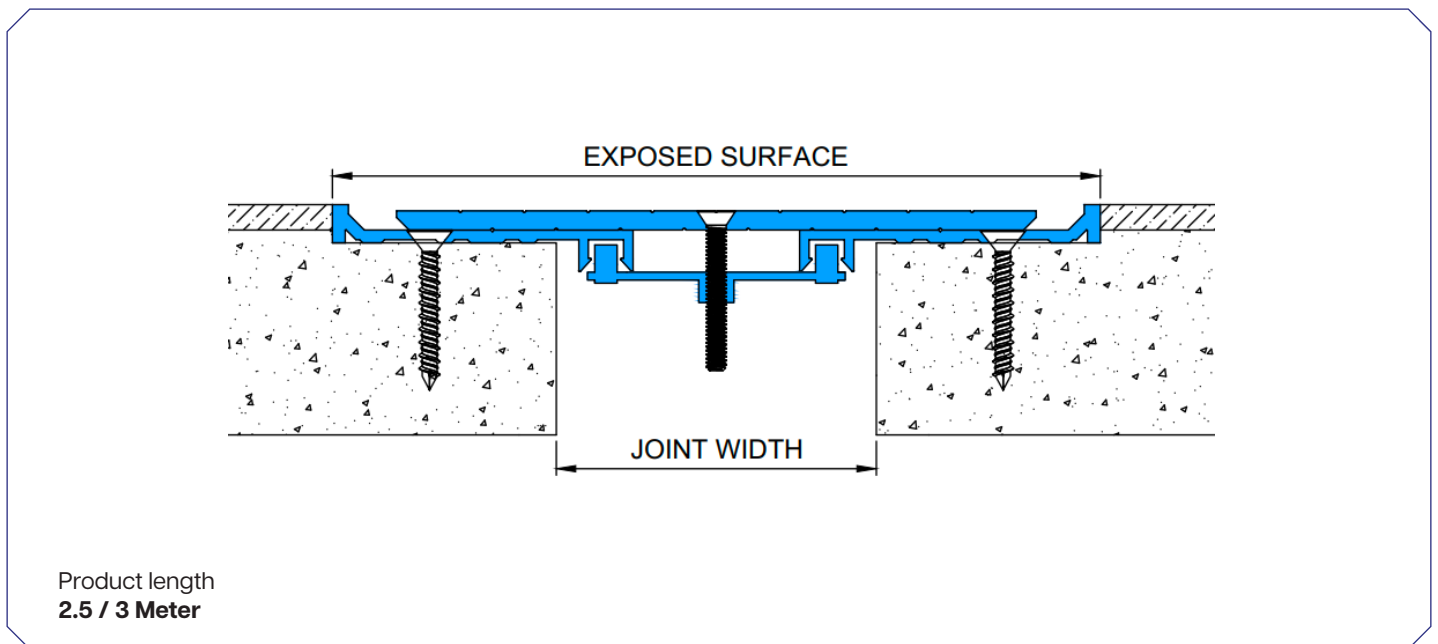


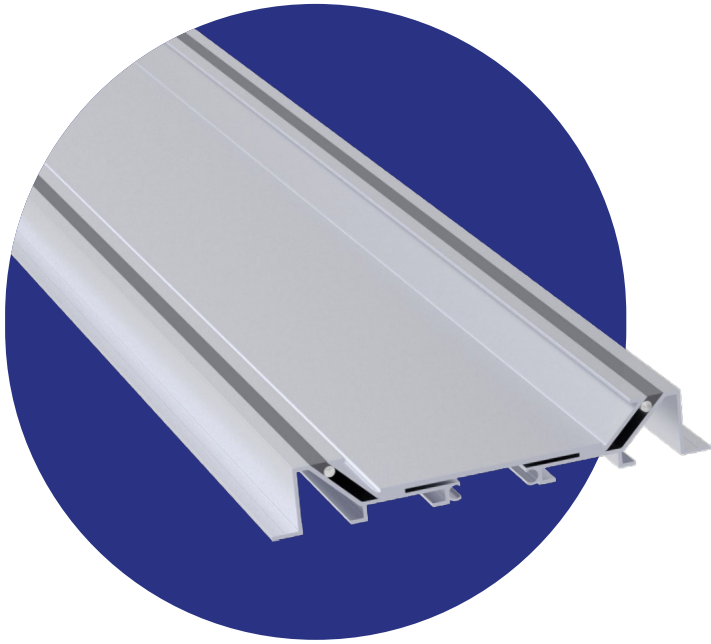
F40A

For Floor

- All-metal design.
- Flush Mounted surface.
- Suitable for areas with vehicular access, including parking structures.
- Can be used for seismic applications.

Model	Joint Width (mm)	Exposed Surface (mm)	Blockout Height (mm)	Movement Capacity (mm)
F40A-75	75	215	10	+50/-38
F40A-100	100	240	10	+50/-50
F40A-150	150	290	10	+75/-75
F40A-200	200	340	12	+100/-100
F40A-250	250	390	12	+125/-125
F40A-300	300	440	12	+140/-150



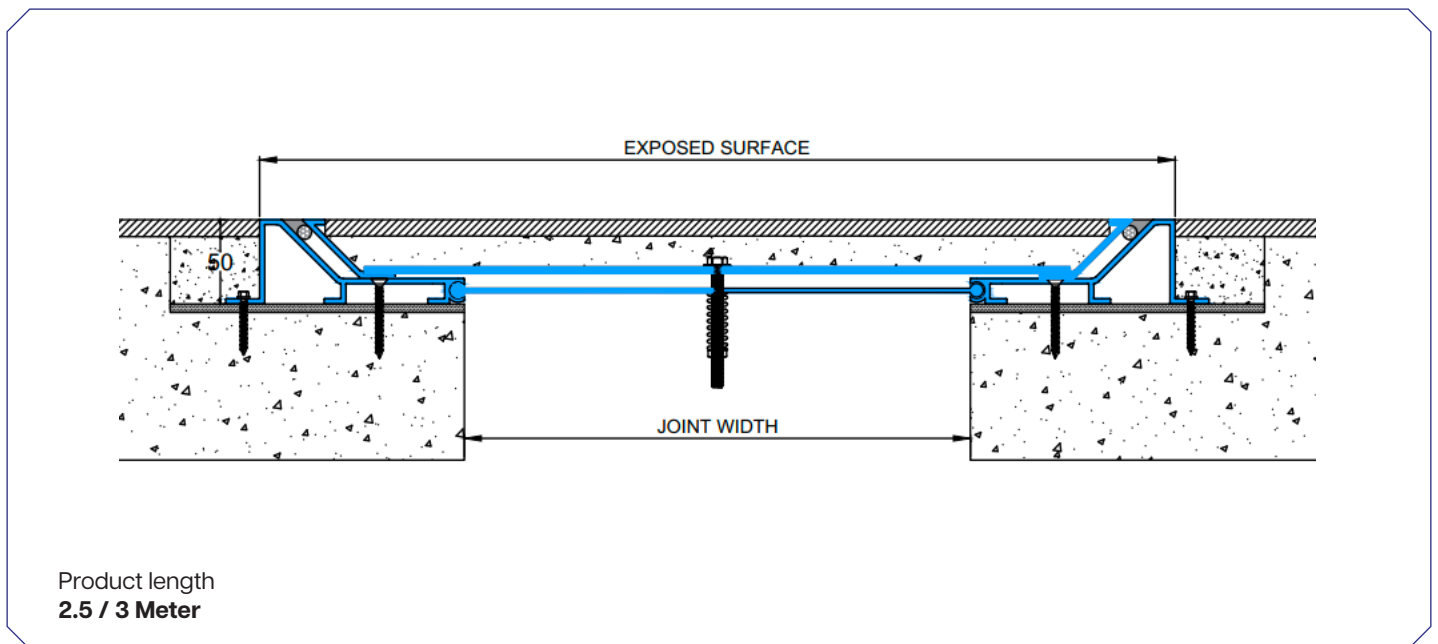


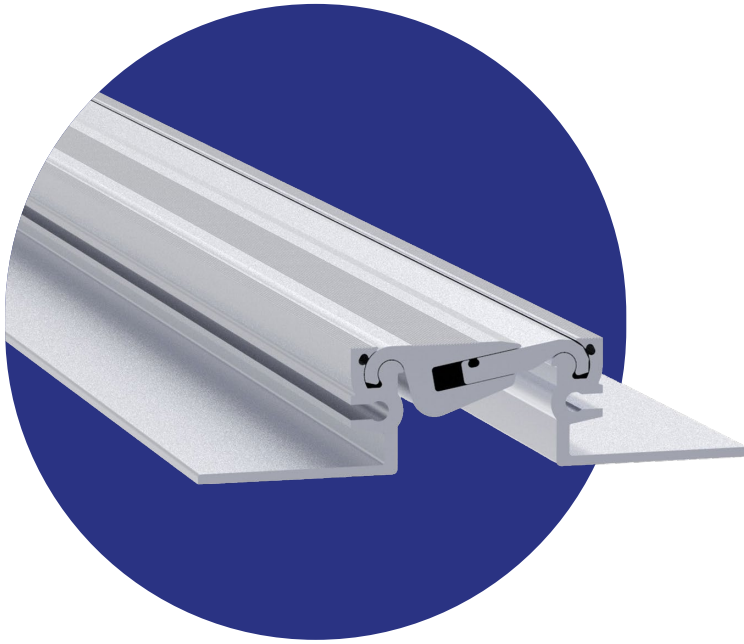
F50A

For Floor

- High movement for seismic events.
- Pop up repositioning system.
- Reduced sightline.
- Suitable for small expansion joint width.

Model	Joint Width (mm)	Exposed Surface (mm)	Blockout Height (mm)	Movement Capacity (mm)
F50A-50	50	295	50	+25/-25
F50A-75	75	320	50	+38/-38
F50A-100	100	345	50	+50/-50
F50A-150	150	395	50	+75/-75
F50A-200	200	445	50	+100/-100
F50A-250	250	495	50	+110/-125
F50A-300	300	545	50	+110/-150



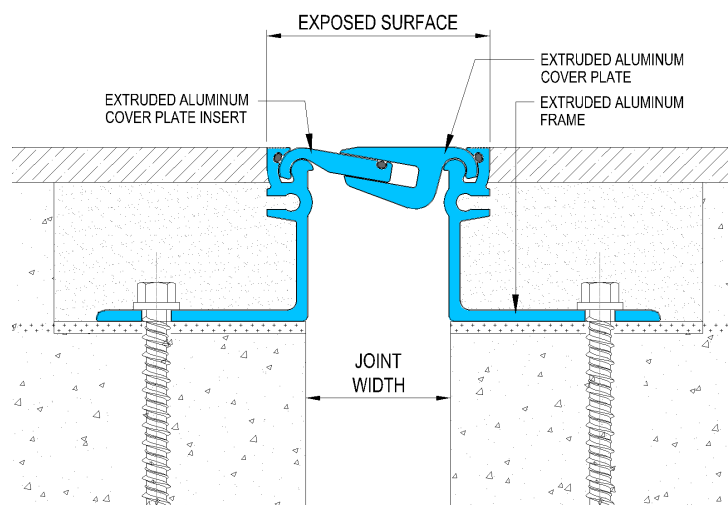


F10A

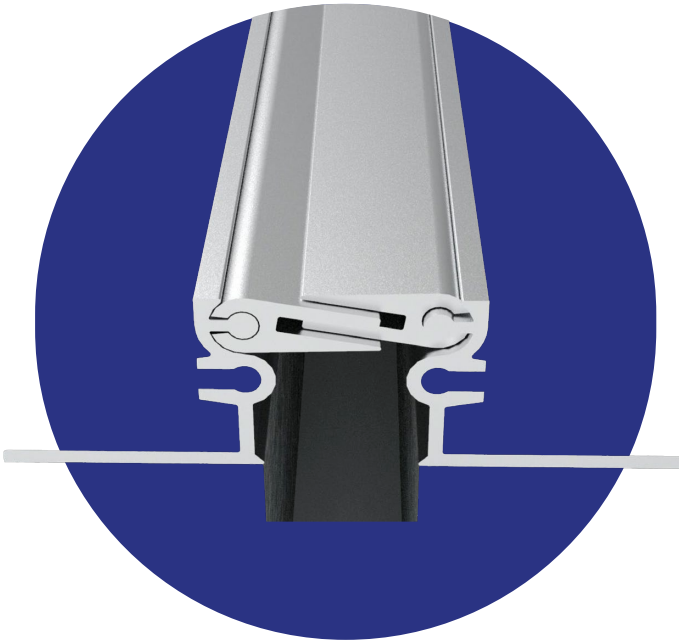
For Floor

- Offers multi-directional movement.
- Optional waterstop is available.
- Interior and exterior seismic applications.
- Compatible with finishes like terrazzo, pavers, tile and timber.

Model	Joint Width (mm)	Exposed Surface (mm)	Blockout Height (mm)	Movement Capacity (mm)
F10A-50-22	50	77	22	20(±10)
F10A-50-30	50	77	30	20(±10)
F10A-50-40	50	77	40	20(±10)
F10A-50-50	50	77	50	20(±10)
F10A-50-60	50	77	60	20(±10)
F10A-50-75	50	77	75	20(±10)
F10A-50-85	50	77	85	20(±10)
F10A-50-95	50	77	95	20(±10)



Product length
3.0 Meter

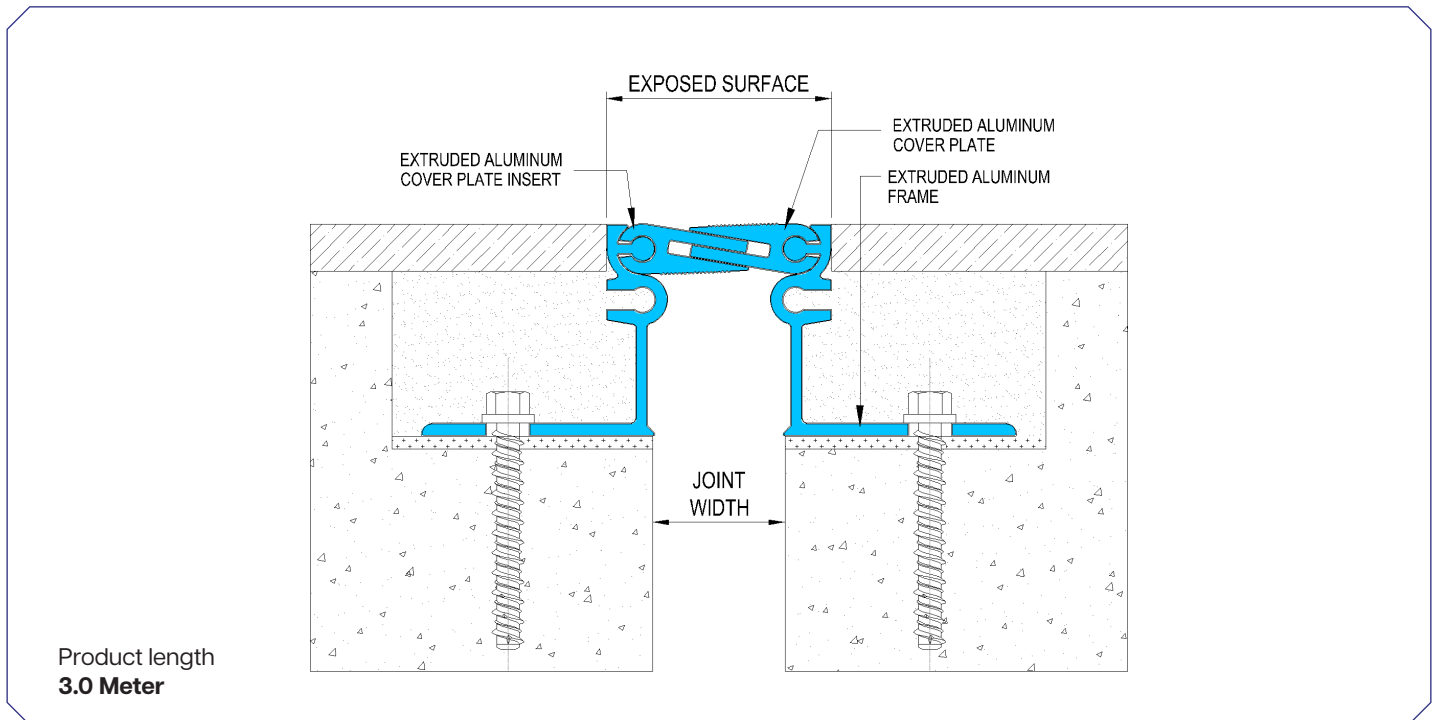


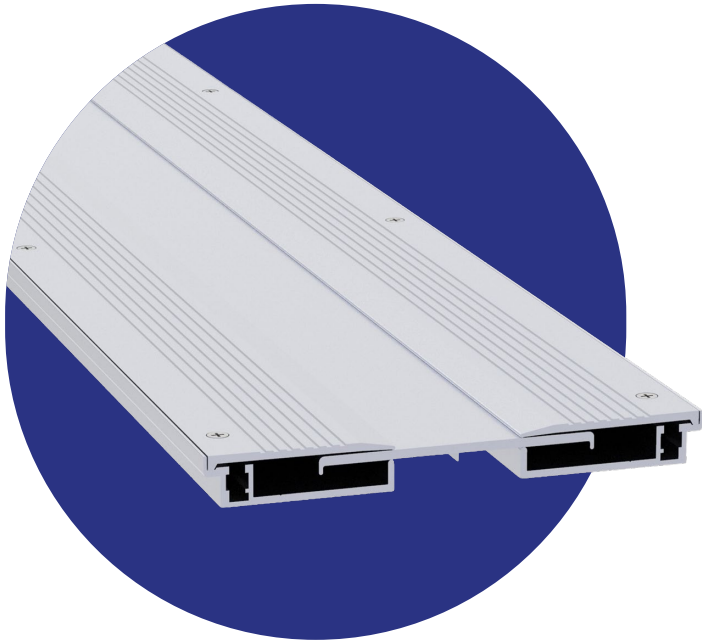
F11A

For Floor

- Offers multi-directional movement.
- Optional waterstop is available.
- Interior and exterior seismic applications.
- Compatible with finishes like terrazzo, pavers, tile and timber.

Model	Joint Width (mm)	Exposed Surface (mm)	Minimum Opening (mm)	Maximum Opening (mm)	Loading Capacity
F11A-25-20	25-30	53	20	10(±5)	90
F11A-25-30	25-30	53	30	10(±5)	90
F11A-25-38	25-30	53	38	10(±5)	90
F11A-25-50	25-30	53	40	10(±5)	90



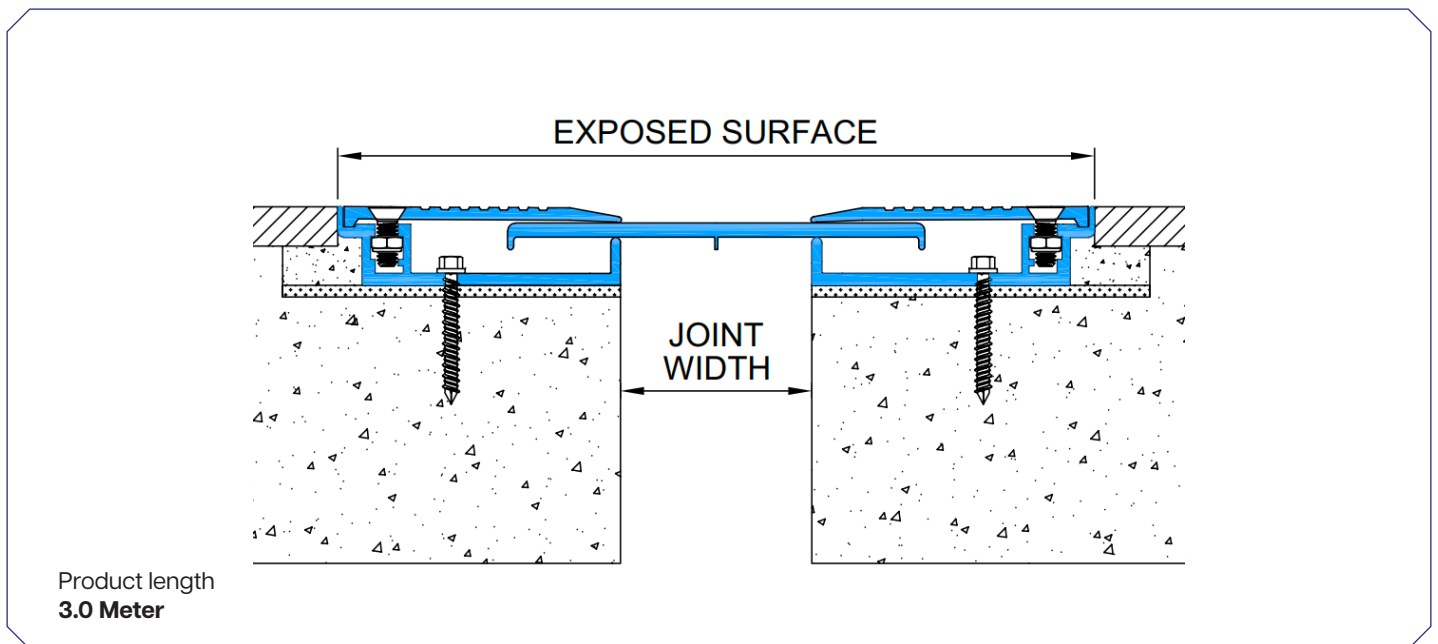


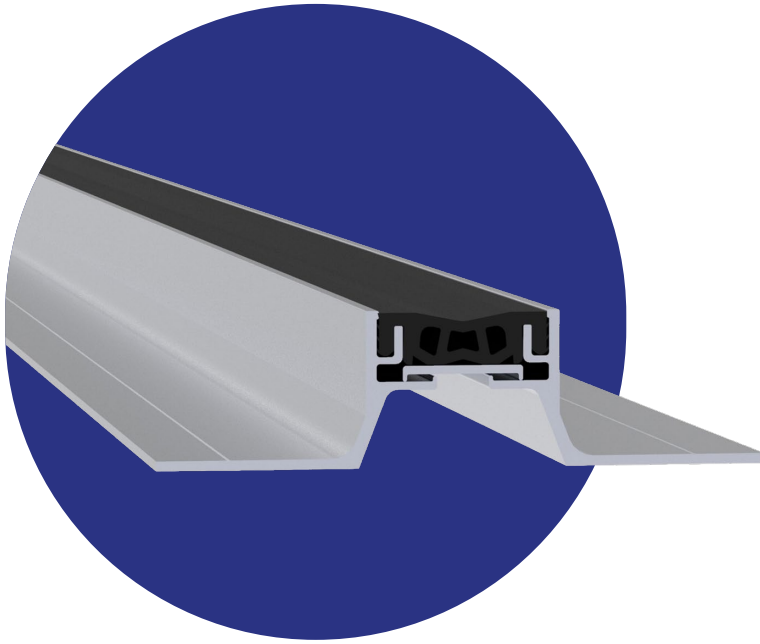
F30A

For Floor

- Low maintenance and tamper proof.
- Free-floating center plate.
- Suitable for most floor finishes.
- Optional vapour barrier for moisture areas.

Model	Joint Width (mm)	Exposed Surface (mm)	Blockout Height (mm)	Movement Capacity (mm)
F30A-50	50	200	25	25
F30A-75	75	225	38	25
F30A-100	100	250	50	25
F30A-125	125	275	63	25
F30A-150	150	300	75	25
F30A-200	200	250	100	25



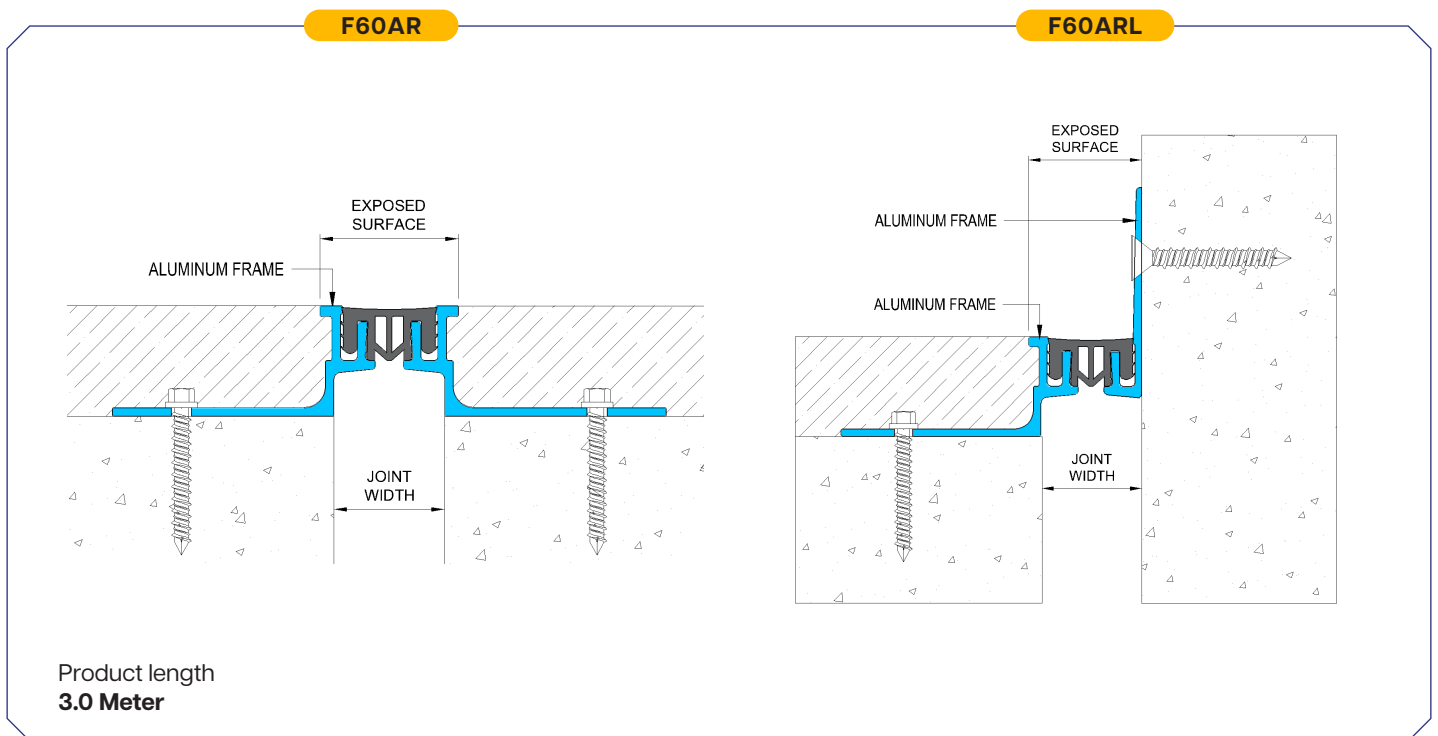


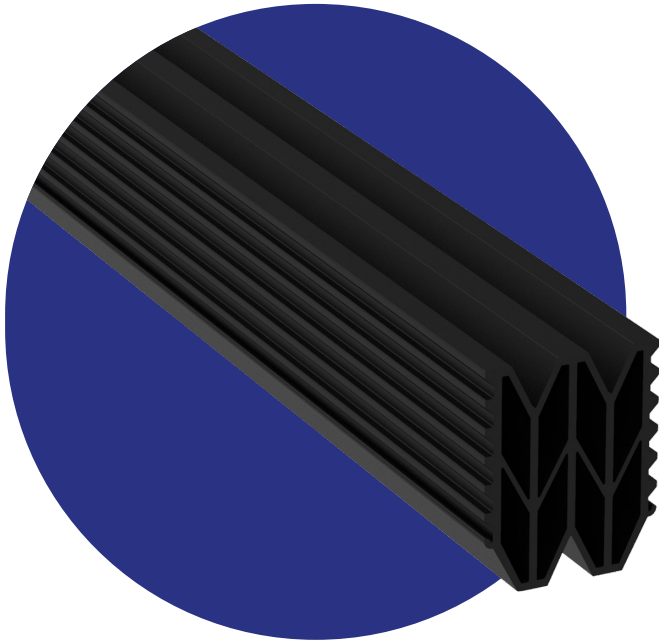
F60AR

For Floor

- Designed for minimal visual appearance.
- Multi-directional movement.
- The insert is hard-wearing, temperature-resistant and replaceable.
- The frame depth can be varied to suit selected floor finish.

Model	Joint Width (mm)	Exposed Surface (mm)	Minimum Opening (mm)	Maximum Opening (mm)	Block Height (mm)
F60AR-25	25	32	19	31	25-75
F60AR-50	50	48	38	63	25-75
F60ARL-25	25	29	19	31	25-75
F60ARL-50	50	49	38	63	25-75



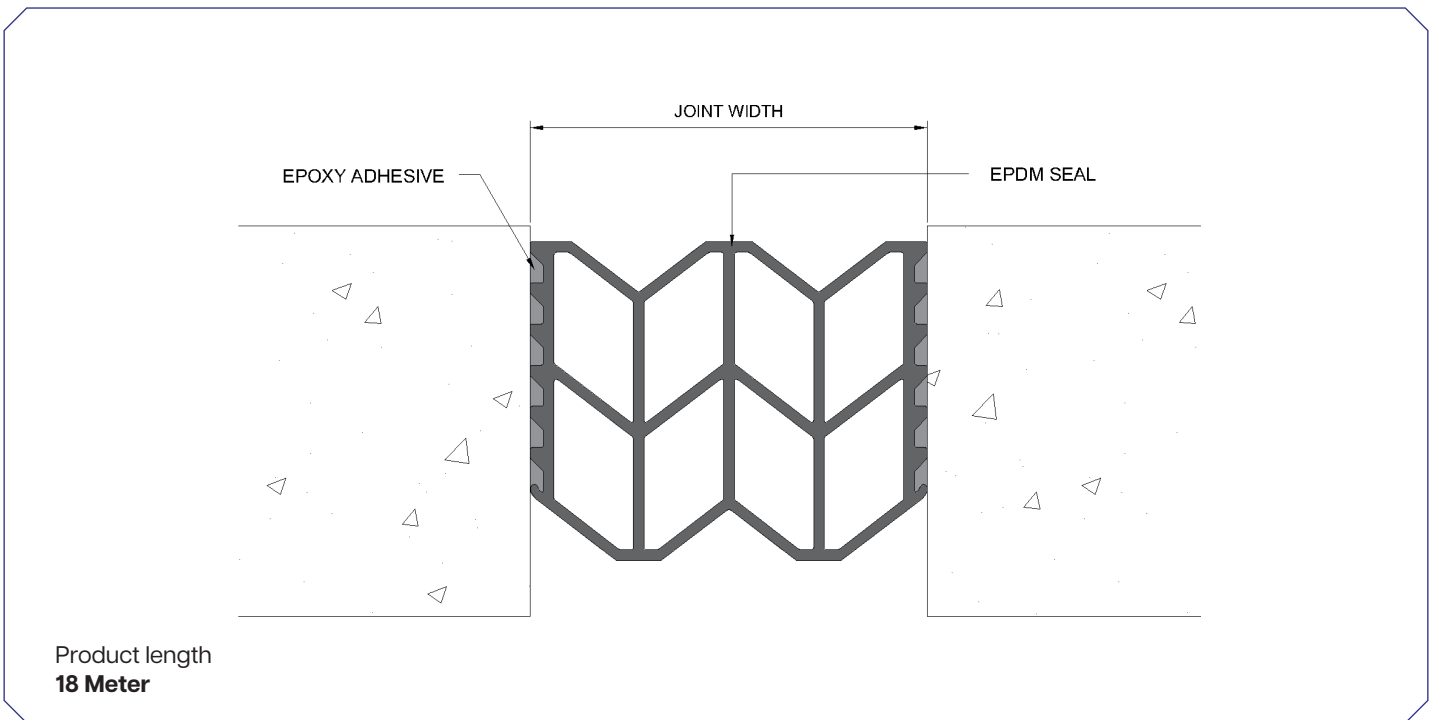


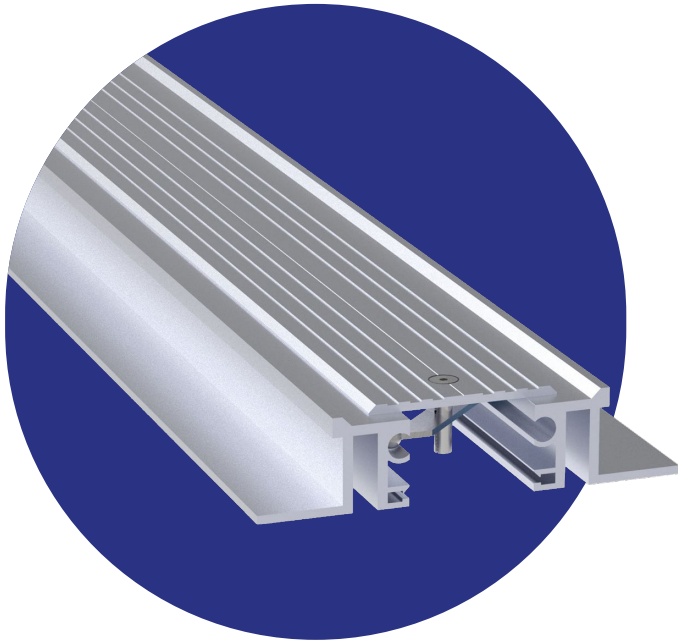
F70R

For Floor

- Movement capability of +/-50%.
- Designed for seismic applications with vehicular traffic.
- Made from hard-wearing epdm that is resistant to temperature (-30°C to +120°C)
- Epoxy adhesive is used for installation.

Model	Joint Width (mm)	Exposed Surface (mm)	Minimum Opening (mm)	Maximum Opening (mm)	Block Height (mm)
F70R-25	25	25	13	38	N/M
F70R-50	50	50	25	75	N/M
F70R-75	75	75	38	113	N/M
F70R-100	100	100	50	150	N/M



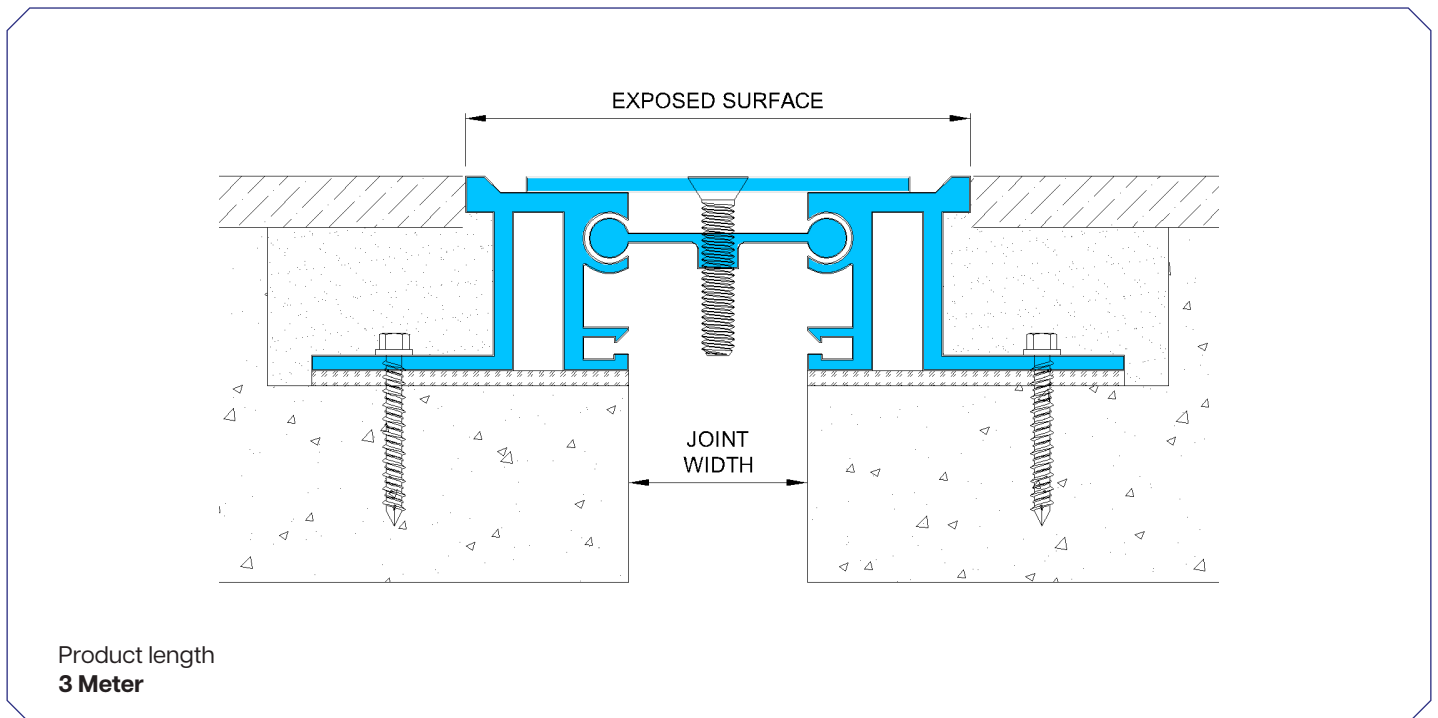


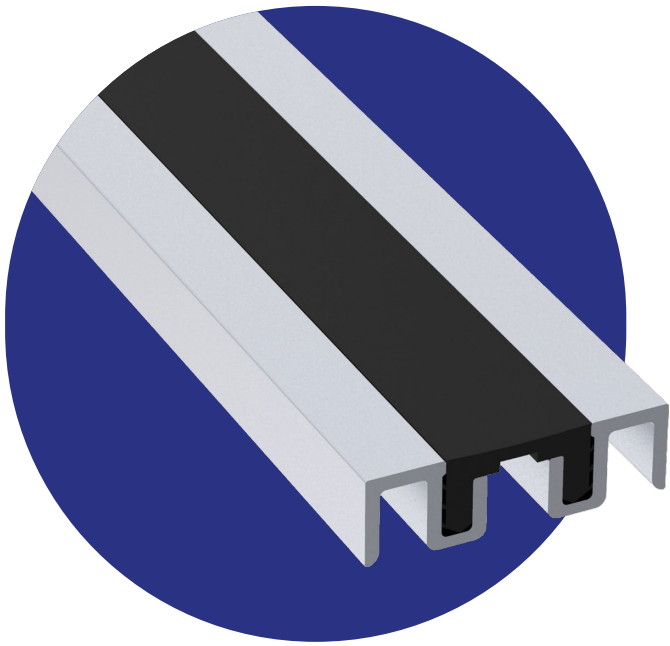
F20S

For Floor

- Self-centering plate ensures a smooth, bump-free.
- Offers multi-directional movement.
- Optional vapour barrier for moisture areas.
- Interior and exterior seismic applications.
- Compatible with finished like terrazzo, pavers, tile and timber.

Model	Joint Width (mm)	Exposed Surface (mm)	Minimum Opening (mm)	Maximum Opening (mm)	Block Height (mm)
F20S-25	25	88	10	45	40
F20S-50	50	113	25	70	40
F20S-75	75	138	50	95	40



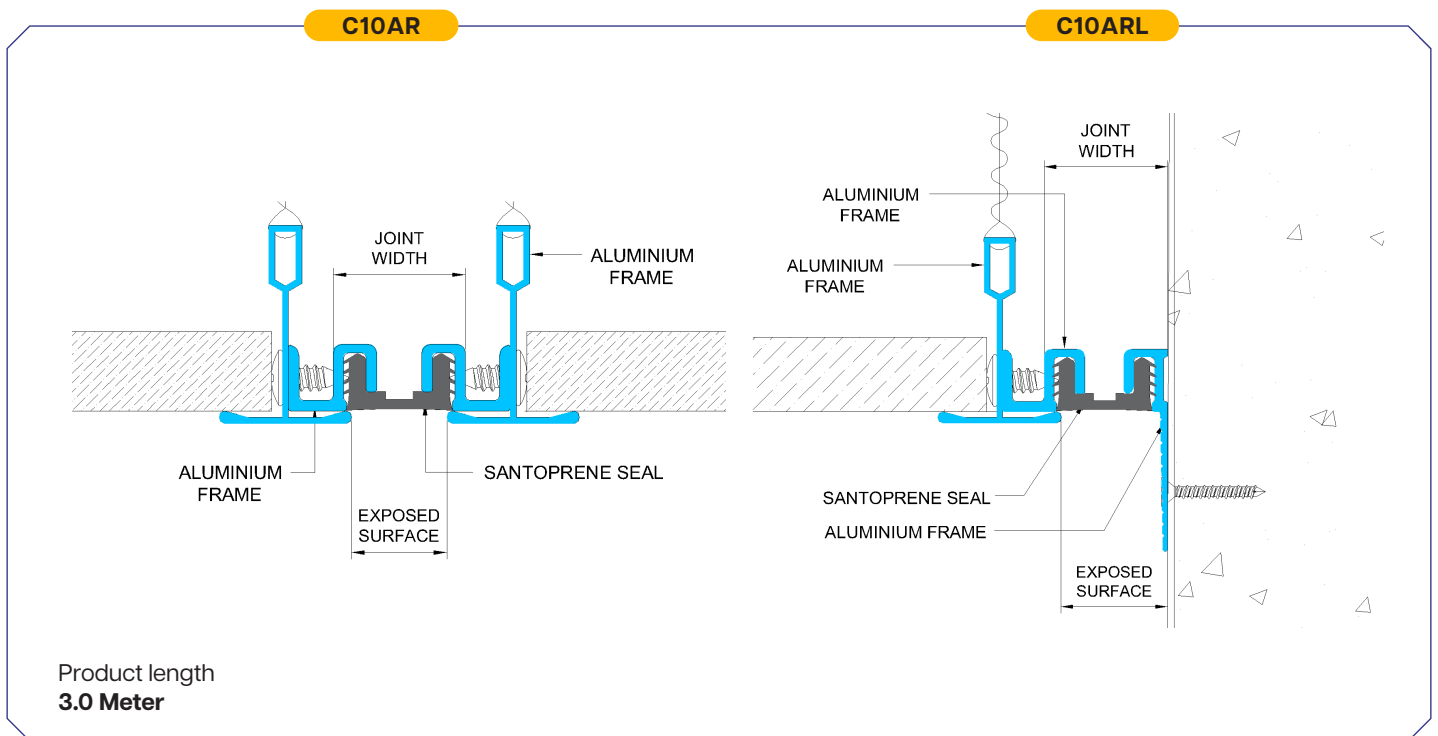


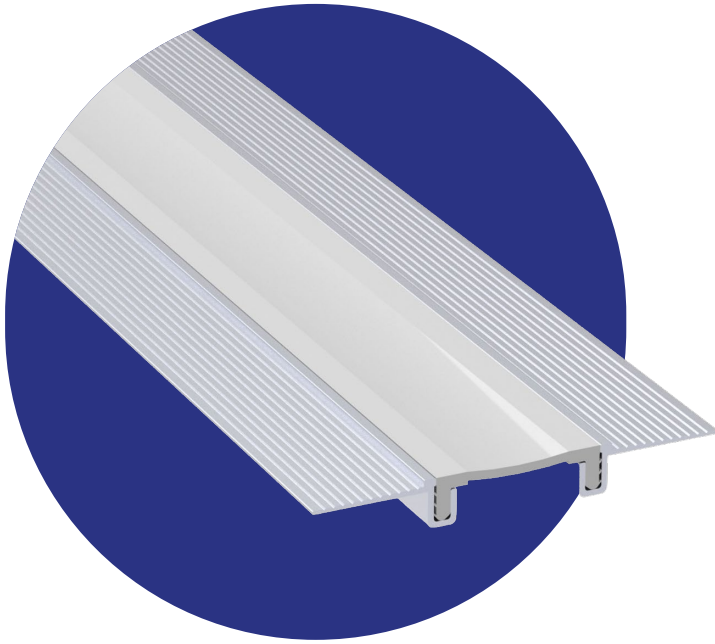
C10AR

For Ceiling

- Minimal visual impact.
- Multi-directional movement.
- Flexible santoprene insert, temperature resistant (-30°C to +120°C).
- Lightweight for easy installation.

Model	Joint Width (mm)	Exposed Surface (mm)	Minimum Opening (mm)	Maximum Opening (mm)	Block Height (mm)
C10AR-25	25	21	19	31	N/M
C10AR-50	50	41	38	63	N/M
C10ARL-25	25	25	19	31	N/M
C10ARL-50	50	44	38	63	N/M



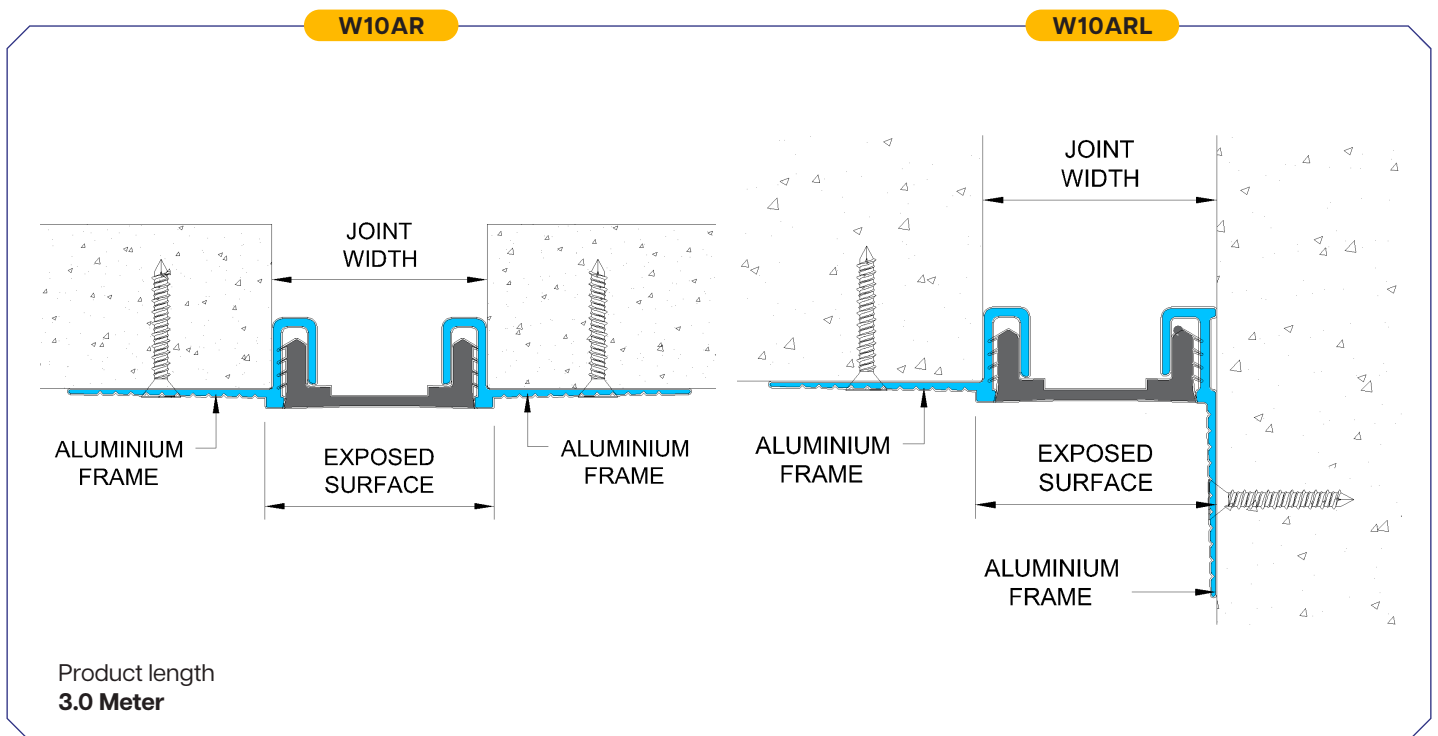


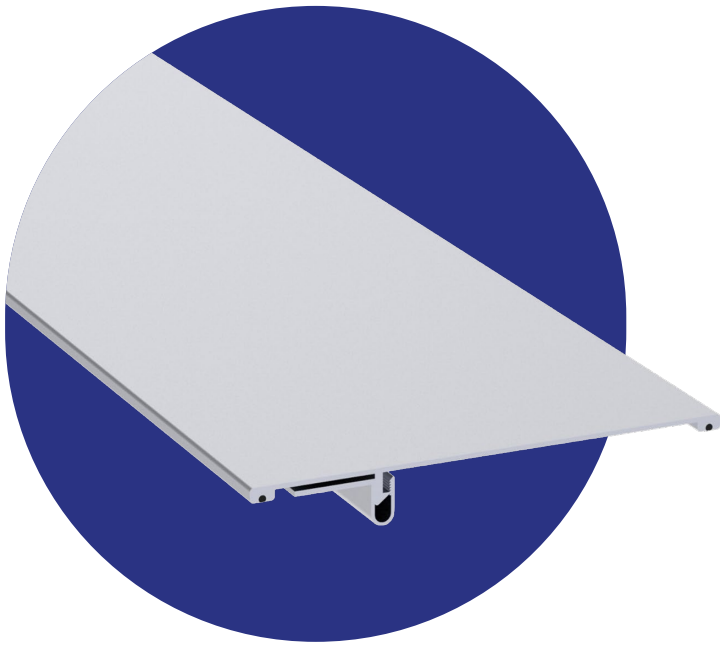
W10AR

For Wall and Ceiling

- Minimal visual impact.
- Multi-directional movement.
- Flexible santoprene insert, temperature resistant (-30°C to +120°C).
- Quick and easy installation.

Model	Joint Width (mm)	Exposed Surface (mm)	Minimum Opening (mm)	Maximum Opening (mm)	Block Height (mm)
W10AR-25	25	27	19	31	N/M
W10AR-50	50	52	38	63	N/M
W10ARL-25	25	27	19	31	N/M
W10ARL-50	50	52	38	63	N/M



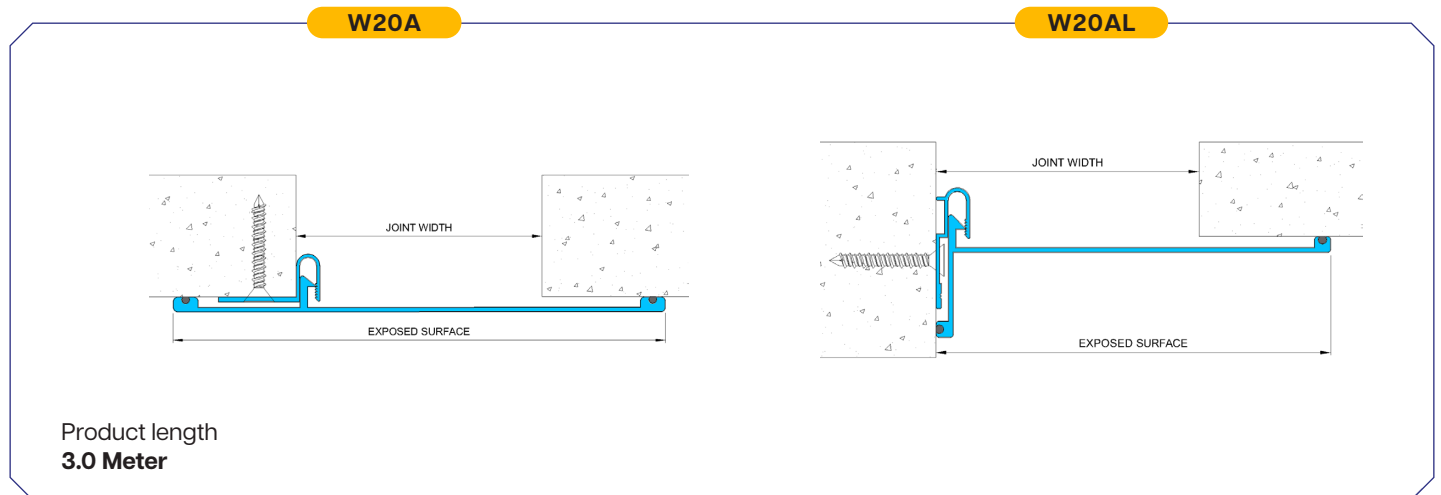


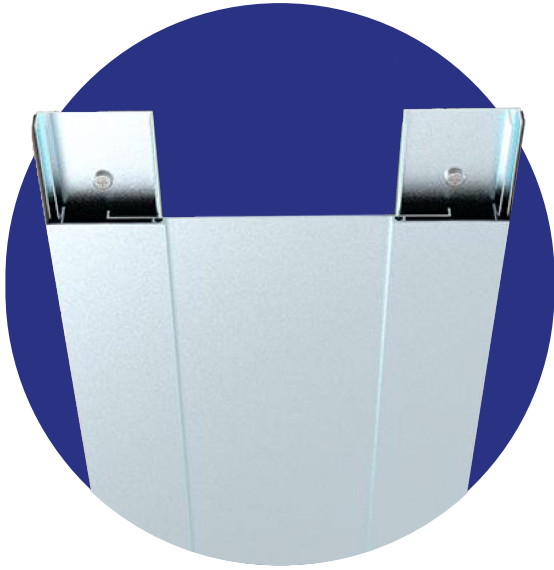
W20A

For Wall and Ceiling

- Snap-fit cover hides fasteners for a clean look.
- Ideal for retrofit and surface-mount projects.
- The cover can be painted or anodized to match wall finish.

Application	Model	Joint Width (mm)	Total Movement (mm)	Exposed Surface(mm)
Wall/Wall Ceiling/Ceiling	W20A-50	50	+50/-25	150
	W20A-75	75	+50/-50	175
	W20A-100	100	+50/-75	200
	W20A-150	150	+50/-125	250
	W20A-200	200	+50/-175	300
Wall/Corner Ceiling/Wall	W20AL-50	50	+50/-25	100
	W20AL-75	75	+50/-50	125
	W20AL-100	100	+50/-75	150
	W20AL-150	150	+50/-125	200
	W20AL-200	200	+50/-175	250



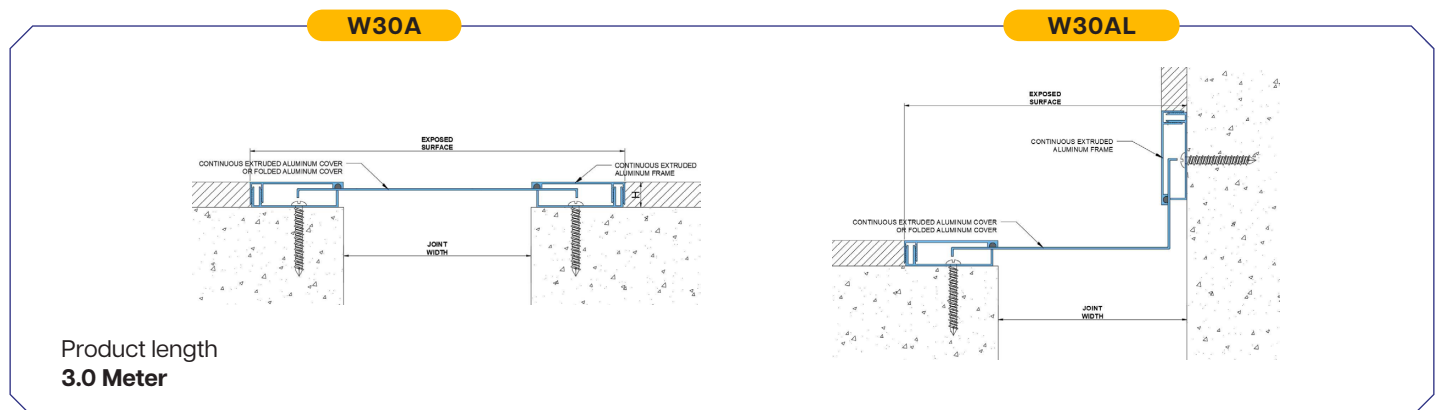


W30A

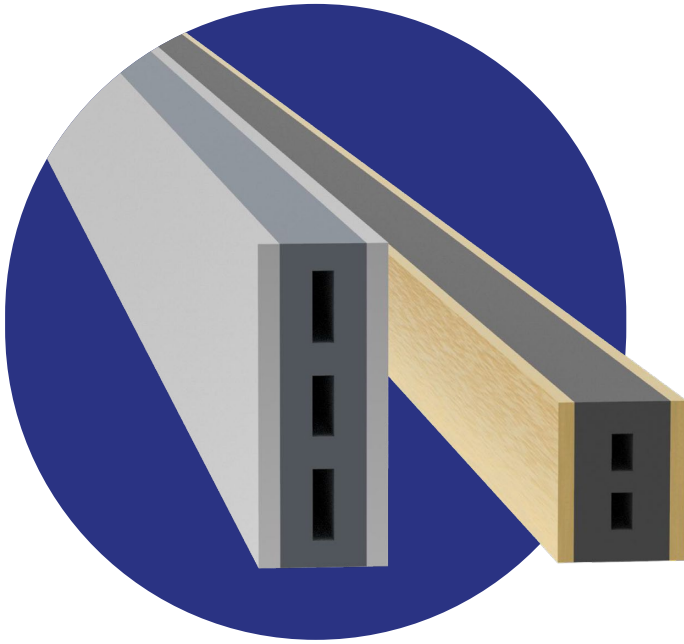
For Wall and Ceiling

- Designed for low maintenance and tamper-resistant applications.
- Snap-fit designs ensures easy assembly and no exposed fasteners.
- Provides a flush finish in drywall applications.
- The cover can be painted to match wall finish.

Application	Model	Joint Width (mm)	Total Movement (mm)	Exposed Surface(mm)	Frame Thickness (mm)
Wall/Wall Ceiling/Ceiling	W30A-50	50	+38/-38	150	1
	W30A-75	75	+38/-38	175	1
	W30A-100	100	+38/-38	200	1
	W30A-150	150	+38/-38	250	1
	W30A-200	250	+56/-56	300	1
	W30A-250	400	+56/-56	350	1
	W30A-300	450	+56/-56	400	1
Wall/Corner Ceiling/Wall	W30AL-50	50	+19/-19	100	1
	W30AL-75	75	+19/-19	125	1
	W30AL-100	100	+19/-19	150	1
	W30AL-150	150	+19/-19	200	1
	W30AL-200	275	+19/-19	250	1
	W30AL-250	325	+19/-19	300	1
	W30AL-300	375	+19/-19	350	1



Another quality product by

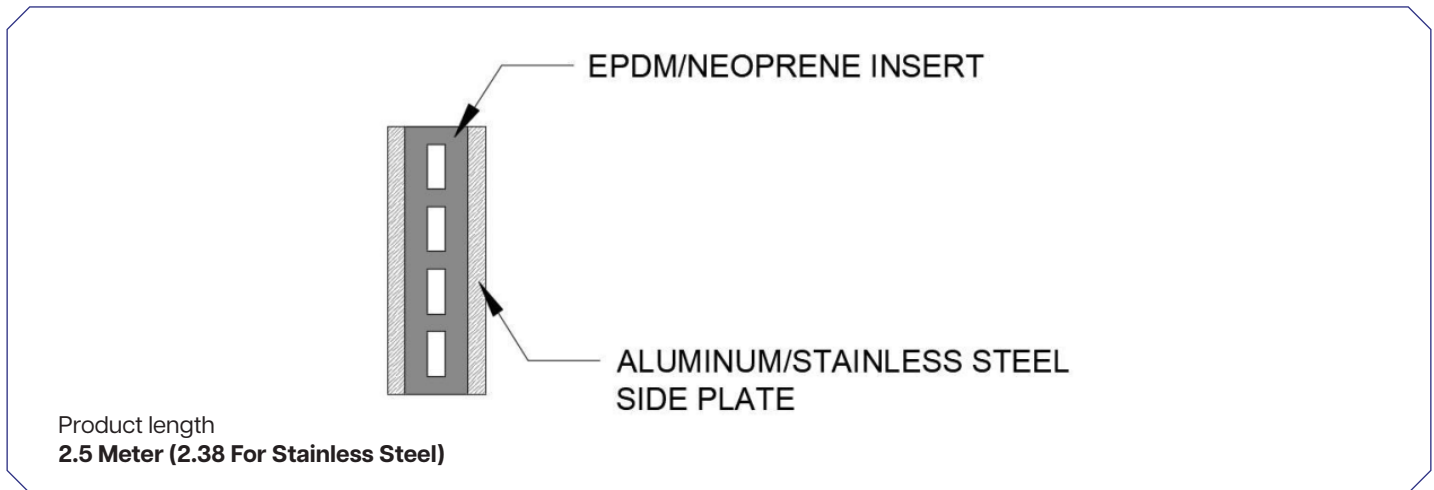


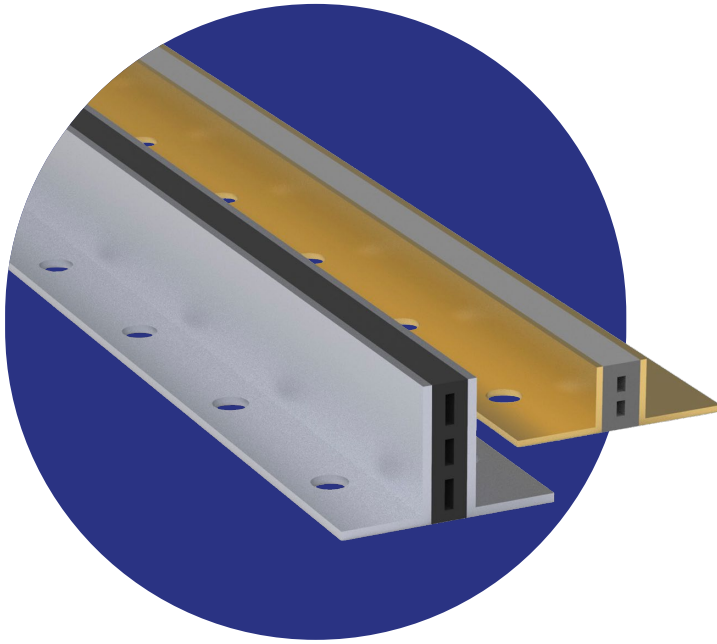
T110A

For Movement Joint

- Withstand forklift traffic.
- Slim appearance.
- Reduces sound from traffic.
- Suitable for subsequent grinding.
- Designed to be saw cut into finished floor.

Model	Exposed Surface (mm)	Total Width (mm)	Movement Capacity(mm)	Height (mm)
T110A-0612	8/9	8/9	2(±1)	12
T110A-0615	8/9	8/9	2(±1)	15
T110A-0618	8/9	8/9	2(±1)	18
T110A-0620	8/9	8/9	2(±1)	20
T110A-0625	8/9	8/9	2(±1)	25
T110A-0630	8/9	8/9	2(±1)	30
T110A-0635	8/9	8/9	2(±1)	35
T110A-0640	8/9	8/9	2(±1)	40
T110A-0645	8/9	8/9	2(±1)	45
T110A-0650	8/9	8/9	2(±1)	50



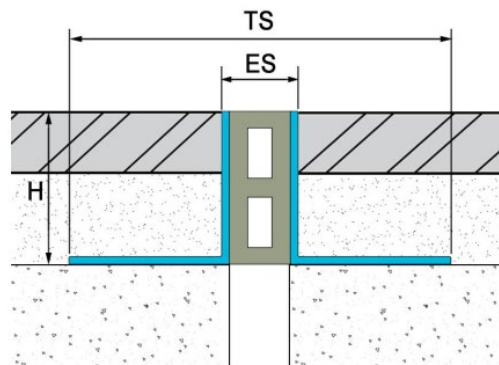


TT10A

For Movement Joint

- Withstand forklift traffic.
- Slim appearance.
- Reduces sound from traffic.
- Suitable for subsequent grinding.

Model	Exposed Surface (mm)	Total Width (mm)	Movement Capacity(mm)	Height (mm)
TT10A-0912	9	46	±1.5	12
TT10A-0915	9	46	±1.5	15
TT10A-0918	9	46	±1.5	18
TT10A-0920	9	46	±1.5	20
TT10A-0922	9	46	±1.5	22
TT10A-0925	9	46	±1.5	25
TT10A-0930	9	46	±1.5	30
TT10A-0935	9	46	±1.5	35
TT10A-0940	9	46	±1.5	40
TT10A-0945	9	46	±1.5	45
TT10A-0950	9	46	±1.5	50



Product length
2.5 Meter (2.38 For Stainless Steel)

